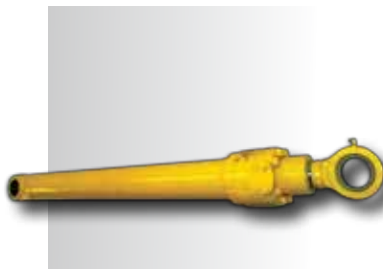




NEW & USED PARTS



Hydraulic Pumps



Cylinders



Undercarriage Parts



Ground Engaging Tools



Filters

WWW.HIGHWAY-EQUIPMENT.COM

ZELIENOPE
 22035 Perry Highway
 Zelenople, PA 16063
PHONE 724.452.7800
TOLL FREE 800.222.8798

Dubois
 P.O. Box 625
 4690 Route 219
 Dubois, PA 15801
PHONE 814.371.3600
TOLL FREE 877.888.4326

Canton
 1405 Timken Place SW
 Canton, Ohio 44706
PHONE 330.915.8391

Charlotte
 305 Executive Park Drive
 Concord, NC 28025
PHONE 980-579-2759

Machinery Rental (MRC)
 6465 Hamilton Ave.
 Pittsburgh, PA 15206
PHONE 412.361.3600

McKean (Erie)
 5846 West Road
 McKean, PA 16426
PHONE 814.476.7755
TOLL FREE 866.476.7755

Roanoke
 8071 Lee Highway
 Troutville, VA 24175
PHONE 540.992.4650



Since 1933

PARTS & SERVICE



Dedicated service and support for all makes and models of equipment

“Service Is Our Best Product” has been HECO’s mission since 1933.

With immediate access to parts and service, downtime for your company will be dramatically reduced. Our team of industry and factory trained experts will lessen the stress and time to get you back up and running. With our Parts and Service Centers located in Pennsylvania, Ohio, Virginia and North Carolina, you can be confident your needs will be met.

Highway Equipment has a fleet of state-of-the-art field service trucks and a 30,000+ parts inventory on hand to support your necessary equipment maintenance.

OUR ADVANTAGES

- Industry experts and trained technicians to service you
- State-of-the-art field service trucks
- Hydraulics repair facility
- Extensive parts inventory to support your equipment
- Efficient computer aided parts lookup with direct communication to the manufacturers
- Online parts ordering system

To schedule a service appointment and order parts; contact one of our Parts and Service Centers or visit our website at www.highway-equipment.com.

WWW.HIGHWAY-EQUIPMENT.COM



EQUIPMENT

Highway Equipment is recognized as a top 10 dealer in the nation for most of our suppliers and product lines, including: excavators, wheel loaders and heavy equipment, trucks, screens and crushers, erosion control and blowers, rollers, asphalt and paving equipment.

PARTS & SERVICE FOR THE FOLLOWING BRANDS

- Kobelco Excavators
 - Kobelco Cranes
 - Hyundai
 - Gradall Excavators
 - Kawasaki Loaders
 - Roadtec
 - Sakai Rollers
 - Bell Trucks
 - Allied-Rammer
 - KPI-Astec
 - IHI
 - FINN
 - CNH
 - LayMor
 - VacuWorx
 - Magnum Processing
 - Geith
- Hensley
 - Rockland
 - Werk-Brau
 - Strickland
 - Paladin
 - JRB
 - Bradco
 - Sweepster
- After-Market**
- Hensley Teeth
 - Allied Breaker Bits
 - MTG
 - Black Cat
 - Fleetguard Filters
 - Parker Hoses
 - Hitachi, Komatsu,
- Caterpillar,
 - Mitsubishi, Rexroth,
 - Uchida, Kayaba,
 - Dakin, Liebherr,
 - Sauerdanfoss,
 - Sunstrand, KYB,
 - Eagle, FPT, Eaton,
 - Nachi, Nabtesco,
 - Nabis, Vickers,
 - Cherrylnn, Cessesa,
 - Bonfiglioli, Deijin,
 - Seiki, Shibaura,
 - Doosan, Sun
 - Hydraulics, Prince,
 - cross manuf.

“In this type of operation, machine uptime is critical and Highway Equipment Company fully understands that. If we need parts or service assistance, I know I can give Highway a call and someone will get here right away. Having that trust and reliability makes all the difference.”

Vinnie Neiswonger
Neiswonger Construction Co.
Strattanville, Pennsylvania

ABOUT HECO



Founded in 1933, Highway Equipment Company is one of America's leading sales, rental, parts, and service providers of highway, construction, oil and gas, mining, quarry and industrial material-handling equipment. Highway Equipment's real advantages stem from our dedicated people, a long history of industry experience, and the breadth of products and services we offer.

Highway Equipment Company

Real People.

Real History.

Real Service.

SOME OF OUR SERVICES

- Rebuilds of hydraulics components, pumps, cylinders, hammers.
- Diagnostics, troubleshooting, and technical support
- Parts replacements and repairs
- Preventative maintenance
- Shop and field service options



FACILITIES & EQUIPMENT

- Hydraulic Pump Room
- Injector Test Facility
- 25' Cylinder Press
- 200 Ton Track Press
- Transmission Test Bench
- Track Spring Compression Box
- Hydraulic Torque Wrench (20K+)

OUR PEOPLE

- Faculty trained technicians for all product lines
- Over 1,200 technician training hours annually
- Certified welders
- SRC Quality Check List

TIME IS MONEY

At Highway we realize your time is limited and searching all over town for the items you need is inefficient and non-productive.

- **Online Ordering Capabilities**
www.highway-equipment/parts
- **Onsite Support**
- **Off-Hour Ordering and Assistance** (additional charges may apply)
- **Freight Expediting**