

# ANACONDA<sup>®</sup>

CRUSH | SCREEN | STACK



**SCREENERS**



**SCALPERS**



**TROMMELS**



**CONVEYORS**



[www.anacondaequipment.com](http://www.anacondaequipment.com)

[www.pdfactory.com](http://www.pdfactory.com)



## **NORTHERN IRELAND IS UNDOUBTEDLY THE GLOBAL LEADER IN MOBILE SCREENING AND MATERIALS HANDLING.**

Anaconda Equipment International Ltd has played it's part in this prestigious recognition. The company was formed in 2005 under the name Quality Fabrications Ltd but has now established its presence as a reliable partner of choice under the Anaconda brand.

Based in County Tyrone, the company specialises in the design and manufacture of mobile crushing & screening equipment as well as a wide range of wheeled, tracked and static conveying solutions for the mining, quarry and waste recycling industries.

In 2008, the company began manufacturing a range of mobile conveyors and launched these directly onto the market in the USA. After this successful launch, the company renamed to Anaconda Equipment International Ltd and today is building a strong dealer network throughout the globe.

Anaconda use only the finest component parts and design products that are robust, user friendly, and with many features/options to benefit our customers.

[www.anacondaequipment.com](http://www.anacondaequipment.com)



# INDEX

## SCREENERS



**SR514 (2 DECK / 3 DECK)**



**SR410**

## SCALPERS



**DF514**



**DF512**



**DF410**



**FSL100**

## TROMMELS



**TD620**



**TD516**

## CONVEYORS



**FTR - SERIES**  
FTR150, FTR100



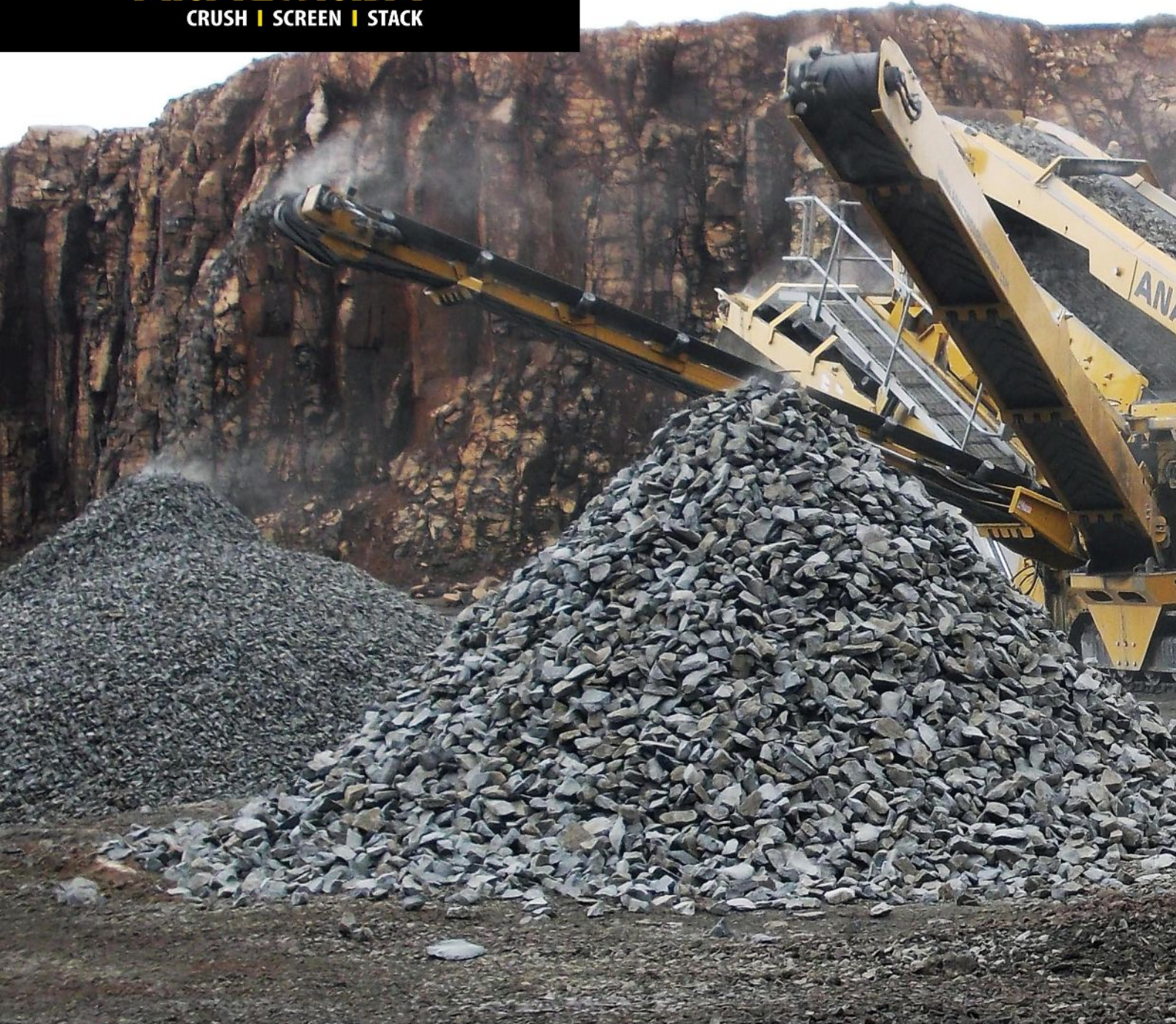
**TR - SERIES**  
TR75, TR60



**ST - SERIES**  
ST80, ST60, ST50



**ANACONDA®**  
CRUSH | SCREEN | STACK



**THE ANACONDA RANGE OF MOBILE SCREENS HAS BEEN DESIGNED WHERE FINE SCREENING IS REQUIRED.**

The SR410 range is designed for optimum screening and stockpiling of materials with the longest screen box in the compact screening segment of the market. The 410 range of tracked screens will fold and ship worldwide in standard 40' sea containers thus keeping shipping costs to a minimum!

The Anaconda SR514 range of screens offer greater screening capacity with performance of up to 350tph possible. The SR514 is available as a two-deck or three-deck screen



# SCREENERS



## FEATURES AND BENEFITS

STAGE 3A - CAT 4.4 - ROW (SR514)  
STAGE 3B - CAT 4.4 - EU (SR514)  
STAGE 3A - JCB 444 DIESELMAX - ROW (SR410)  
STAGE 3B - JCB 444 ECOMAX - EU (SR410)  
TWO-DECK SCREENBOX (THREE-DECK OPTION ON THE SR514)  
HOPPER CAPACITY OF 4M<sup>3</sup> (SR410) OR 6M<sup>3</sup> (SR514)  
SCREEN MESH: TOP DECK (AND MIDDLE ON SR514) SIDE TENSIONED;  
BOTTOM DECK END TENSIONED  
VARIABLE SPEED CONTROL ON ALL STOCKPILE BELTS  
SCREENBOX WALKWAYS FOR EASE OF MAINTENANCE  
SCREENBOX ANGLE ADJUSTABLE: 22-34° (SR514), 28-36° (SR410)

## WEIGHT

2 DECK : 26500 KG / 29 US. TON / 3 DECK : 28500 KG / 31 US. TON (SR514)  
15,500 KG / 17 US TON (SR410)

## OPTIONS

STAGE 3B - JCB 444 ECOMAX - EU (SR514)  
SCREEN DECKS - MESH, PIANO WIRE, PUNCH PLATE  
HOPPER EXTENSIONS  
VIBRATING GRID  
TIPPING GRID  
RADIO REMOTE CONTROL  
DUST COVERS  
ANTI-ROLL BACK

## SCREENERS



SR514 (2 / 3 DECK)



SR410



**ANACONDA®**  
CRUSH | SCREEN | STACK



## THE ANACONDA RANGE OF MOBILE SCALPERS HAS BEEN DESIGNED TO SUIT A VARIETY OF APPLICATIONS.

The DF410 range is designed for optimum screening and stockpiling of materials with the longest screen box in the compact screening segment of the market. The 410 range of tracked screens will fold and ship worldwide in standard 40' sea containers thus keeping shipping costs to a minimum!

The Anaconda DF512 offers greater screening capacity with performance of up to 350tph possible. The DF512 scalper can offer two or three way separation of material.



# SCALPERS



## FEATURES AND BENEFITS

STAGE 3A - CAT 4.4 - ROW (DF512) (DF514)

STAGE 3B - CAT 4.4 - EU (DF512) (DF514)

STAGE 3A - JCB 444 - ROW (DF410)

STAGE 3B - JCB 444 ECOMAX - EU (DF410)

VARIABLE SPEED HEAVY DUTY BELT FEEDER WITH IMPACT BED

FLIP DOWN HOPPER TAILGATE TO ALLOW DIRECT FEED FROM CRUSHER

HYDRAULIC FOLDING STOCKPILE CONVEYORS

FIXED SCREEN ANGLE AT 15° (DF410)

VARIABLE SCREEN ANGLE 17-21° (DF512)

VARIABLE SCREEN ANGLE 15-19° (DF514)

SIDE TENSIONED TOP DECK/END TENSIONED BOTTOM DECK

## WEIGHT

APRON FEEDER : 27,000 KG / 29.7 US TON (DF514)

APRON FEEDER : 25,500 KG / 28.1 US TON (DF512)

BELT FEEDER : 24,500 KG / 27 US TON (DF514)

BELT FEEDER : 23,000 KG / 25.3 US TON (DF512)

15,600 KG / 17.16 US TON (DF410)

## OPTIONAL

STAGE 3A - JCB 444 DIESELMAX 85 KW (115 HP) - ROW (DF512) (DF514)

STAGE 3B - JCB 444 ECOMAX - 93KW (125 HP) - EU (DF512) (DF514)

3A - DEUTZ TD2011 L04 ENGINE 49.4KW (66HP) ROW (DF410)

3B - DEUTZ TD2.9L4 ENGINE 50KW (67HP) EU (DF410)

APRON FEEDER (DF512) (DF514)

RADIO REMOTE CONTROL

SCREEN DECKS :

MESH, BOFOR BAR,

FINGER SCREENS

OR PUNCH PLATE

## SCALPERS



DF514, DF512



DF410





**ANACONDA**<sup>®</sup>  
CRUSH | SCREEN | STACK

## THE FSL100 IS A HEAVY DUTY SCALPING SCREEN DESIGNED FOR THE MOST DIFFICULT OF APPLICATIONS

The FSL100 scalping screen is one of the most robust and reliable scalping screens on the market. Built to handle the toughest of applications, the FSL100 comes with a double deck vibrating screen and the longest stockpiling conveyor available.

The FSL100 can be shipped worldwide in a standard 40' container thus keeping shipping costs to a minimum.



# SCALPERS



## FEATURES & BENEFITS

STAGE 3AJCB 444 DIESELMAX 63KW (84HP) - ROW

STAGE 3BJCB 444 ECOMAX 68KW (91HP) - EU

ROBUST CHASSIS & TRACK FRAME DESIGN ENSURES MAXIMUM DURABILITY

ANGLE ADJUSTABLE VIBRATING GRID

TIPPING FUNCTION ACTIVATED HYDRAULICALLY

CONVEYOR BELT – 3PLY 1050MM (42") WIDE (PLAIN OR CHEVRON)

INDEPENDENTLY CONTROLLED FEEDER AND DISCHARGE BELTS

## OPTIONAL

STAGE 3A - DEUTZ TD2011 L04 ENGINE 49.4KW (66HP) - ROW

STAGE 3B - DEUTZ TD2.9L4 ENGINE 50KW (67HP) - EU

VIBRATING GRID WING EXTENSIONS

OVERBAND MAGNET

WEAR RESISTANT HOPPER LINERS

RADIO REMOTE CONTROL

DUST COVERS

## WEIGHT

20,000 KG / 22 US TON

## SCALPERS



FSL 100



**ANACONDA®**  
CRUSH | SCREEN | STACK



## THE ANACONDA RANGE OF TRACKED TROMMEL ARE DESIGNED TO DELIVER OUTSTANDING PERFORMANCE IN TESTING APPLICATIONS

The trommel 620 is suitable for processing a variety of materials including compost, wood chip, soil, construction and demolition (C&D) waste, and commercial and industrial waste. To minimise downtime the TD620 has been specifically designed for ease of maintenance and service. The TD620 trommel screen is available on wheels or crawler tracks.

Quick and easy to transport around, the TD516 is robust and easy to use ensuring optimum levels of performance every time. Material the TD516 is used to process includes soil, compost, wood chip, skip fines, quarry overburden, C&D waste, shredded household waste, palm kernel and incinerator ash.



# TROMMELS



## FEATURES & BENEFITS

(STAGE 3B) JCB ECOMAX - TIER 4i - (EU) (TD620)  
(STAGE 3A) JCB DIESELMAX - TIER 3 - (ROW) (TD620)  
STAGE 3A JCB 444 DIESELMAX - ROW (TD516)  
STAGE 3B JCB 444 ECOMAX - EU (TD516)  
SCREENING DRUM 5.41M LONG X 2.0M DIAMETER (TD620)  
SCREENING DRUM 5.15M LONG X 1.37M DIAMETER (TD516)  
FORWARD AND REVERSE 4 WHEEL DRIVE DRUM SYSTEM  
VARIABLE SPEED ON SCREENING DRUM AND ALL CONVEYORS  
QUICK DRUM CHANGE [HYDRAULIC DRUM LIFT OUT] (TD620)  
QUICK DRUM RELEASE AND REPLACE SYSTEM (TD516)  
DRUM LOAD SENSING SYSTEM (TD620)  
DRUM ANGLE ADJUSTABLE 0° TO 6° (TD620) 0° TO 4° (TD516)  
FOLDS AND TRACKS INTO / OUT OF 40' SEA CONTAINER (TD516)

## OPTIONAL

PUNCH PLATE MESH (TD516)  
SCROLL SCREENING DRUM  
REMOTE TIPPING GRID  
HOPPER EXTENSIONS  
WHEEL CHASSIS

## WEIGHT

20,000 KG / 22 US. TON (TD620)  
14,500 KG / 16 US. TON (TD516)

## TROMMELS



TD620



TD516



**ANACONDA**<sup>®</sup>  
CRUSH | SCREEN | STACK



## THE FTR FEEDER CONVEYOR IS THE LATEST IN A RANGE OF PRODUCTS DESIGNED FOR THE MATERIAL HANDLING INDUSTRY

The FTR 150 & FTR 100 are robust and can be used in a variety of applications including sand & gravel, aggregates, coal, and wood chip. The unit has a variable speed belt feeder and a (50ft / 15m - FTR 150) (33ft / 10m - FTR 100) long stockpiling conveyor which is ideal for truck/wagon/barge loading or to act as a surge feeder in a new/existing quarry plant.

Like all Anaconda products, the FTR 150 / FTR 100 will fold and ship worldwide in a standard 40ft container.



# FEED CONVEYORS



## FEATURES & BENEFITS

STAGE 3A - JCB 444 DIESELMAX - ROW

STAGE 3B - JCB 444 ECOMAX - EU

HOPPER CAPACITY OF 6M<sup>3</sup> (OPTION TO INCREASE THIS TO 9M<sup>3</sup>)

VARIABLE SPEED 4 PLY 1050MM WIDE FEEDER BELT

HYDRAULIC JACKING LEGS FOR EASE OF SET UP

HYDRAULIC FOLDING HEAD SECTION AS STANDARD

EASY ACCESS TO ENGINE COMPARTMENT

## WEIGHT

OPEN FEED: 13,300 KG / 14.7 US TON (FTR150)

WITH TIPPING GRID: 15,000 KG / 16.55 US TON (FTR150)

WITH LIVEHEAD: 17,800 KG / 19.6 US TON (FTR150)

OPEN FEED: 12,700 KG / 14 US TON (FTR100)

WITH TIPPING GRID: 14,400 KG / 15.8 US TON (FTR100)

WITH LIVEHEAD: 17,200 KG / 18.9 US TON (FTR100)

## OPTIONAL

DEUTZ 3A - ROW

DEUTZ 3B ENGINE - EU

FEEDBOOT EXTENSIONS

TWIN DECK VIBRATING GRID

REMOTE CONTROL TIPPING GRID

TWIN DRIVE MOTORS ON FEEDER AND/OR MAIN CONVEYOR

SHORTER DISCHARGE CONVEYOR (10M LONG)

OVERBAND MAGNET

ANTI-ROLL BACK ON MAIN CONVEYOR

DUST COVERS

RADIO REMOTE CONTROL

## FEED CONVEYORS



FTR150, FTR100





## **ANACONDA'S RANGE OF CONVEYORS ARE DESIGNED TO MINIMISE OPERATING COSTS WHILST MAXIMISING STOCKPILE CAPACITY**

Anaconda's range of stockpiling conveyors has been designed to maximise stockpile volumes. Stackers are available from 20ft (6m) to 80ft (24m) with radial stockpiles up to 5000 cubic metres.

Our range of wheeled and tracked conveyors can all be containerized and shipped worldwide cost effectively. Our wheeled conveyors can be containerized in batches of 4 depending on the model. Our tracked conveyors hydraulically fold and are tracked into and out of the container without any dismantling, meaning they are operational within 10 mins of container delivery.



# CONVEYORS



## TRACK DRIVEN CONVEYOR

TR50 – 50FT (15M)

TR60 – 60FT (18M)

TR75 – 75FT (23M)

## RADIAL WHEELED CONVEYOR

ST40 – 40FT (12M)

ST50 – 50FT (15M)

ST60 – 60FT (18M)

ST80 – 80FT (24M)

## OPTIONAL

DIESEL / ELECTRIC DRIVE (TRACKED)

SELF POWERED - CAT, JCB OR DEUTZ ENGINE (WHEELED)

HYDRAULIC COUPLING DRIVE TO RUN OFF MAIN PLANT (WHEELED)

ELECTRIC DRIVE TO RUN OFF MAINS/OTHER PLANT (WHEELED)

BELT WIDTHS FROM 650MM (26") UP TO 1050MM (42")

OVERBAND MAGNET (TRACKED)

CHEVRON BELT

EXTENDED FEEDBOOTS

ENCLOSED SKIRTING

## WEIGHT

ST50 - 2800 KG / 3.09 US. TON

ST60 - 3200 KG / 3.53 US. TON

ST80 - 10,500 KG / 11.58 US TON

## WEIGHT

TR50 - 6,500KG / 7.17 US TON

TR60 - 9,000-11,500 KG / 9.93-12.68 US TON

TR75 - 12, 500 KG / 13.79 US TON

## CONVEYORS



TR - SERIES



ST - SERIES



# SUCCESS



## AWARDS

Prestigious Awards have helped Anaconda build a profile in USA, Australia, Europe and more recently the Far East. These Awards have given Anaconda a global approval stamp which is recognized in numerous countries. These Awards provide an independent endorsement of our company's expertise and professionalism to both customers and distributors around the globe.

*"These awards are recognition of the contribution made by our staff, and we believe these awards mirror our commitment as market leader in a competitive market place. We hope that these awards will continue to have a positive impact on people's perceptions of us as an organisation. These Business awards are highly regarded and respected in the business sector. To be recognised as an excellent company in business is a wonderful achievement." - Martin Quinn, Operations Director*



[www.anacondaequipment.com](http://www.anacondaequipment.com)





# TRADESHOWS



## GLOBAL EVENTS

Attendance at trade exhibitions - We control the presence at an exhibition, everything is done professionally and to the best of our ability. Our stand is designed to maximize product exposure and to enhance the visitor experience.

Anaconda ensure they are aware of what the customer wants in terms of products. Regular contact with our dealers enables us to gauge the needs of the end user so that we can target them with the right product at trade events, open days, through adverts and news stories. It is also very important to introduce new products to market on a regular basis to show that we are continuing to evolve and be innovative.

Regular Shows:

Hillhead - UK  
Conexpo - Las Vegas  
AED Summit & CONDEX - USA  
Steinexpo - Germany  
Bauma - Germany  
Scotplant - UK

[www.anacondaequipment.com](http://www.anacondaequipment.com)





# DEALER NETWORK



## GLOBAL DISTRIBUTION NETWORK

Anaconda markets, sells and distributes all products and spare parts via a dedicated dealer network worldwide. Each dealer provides a professional, competitive and supportive service to all customers within their country/region.

Most dealers carry a stock of equipment for immediate delivery as well as a generous stock of spare parts in order to provide immediate response to any breakdown situation.

For more information on your local dealer please contact Anaconda by sending an email to : [sales@anacondaequipment.com](mailto:sales@anacondaequipment.com).

[www.anacondaequipment.com](http://www.anacondaequipment.com)





# AFTERSALES



## PARTS AND SERVICE

All Anaconda dealers stock a wide range of components to support our products. The factory in Northern Ireland also carries a full inventory of parts that can be shipped out to a dealer if the part is not in stock with them directly.

Using Anaconda genuine spare parts will guarantee the quality of the product and maximise the lifespan of your machine. All Anaconda spare parts are held in stock, competitively priced, and of the same high quality as the machine itself.

All enquires about spare parts should be directed to your local dealer, if there is no dealer in your local area, then please contact the factory direct via email : [parts@anacondaequipment.com](mailto:parts@anacondaequipment.com).

[www.anacondaequipment.com](http://www.anacondaequipment.com)





# **ANACONDA<sup>®</sup>**

**CRUSH | SCREEN | STACK**

## **Head Office**

Anaconda Equipment International.  
Ardboe Business Park, Kilmascally Road  
Dungannon, Co. Tyrone, BT71 5BJ

Tel: +44 (0) 28 867 37878  
Email: [sales@anacondaequipment.com](mailto:sales@anacondaequipment.com)  
Web: [www.anacondaequipment.com](http://www.anacondaequipment.com)

## **USA & Canada**

Anaconda USA Inc.,  
P.O. Box 358, Bellingham,  
MA 02019

Tel: +1 (0) 800 285 5721  
Email: [sales@anacondausa.com](mailto:sales@anacondausa.com)  
Web: [www.anacondausa.com](http://www.anacondausa.com)

