

SCREEN MACHINE™ 107D SCALPER SCREEN PLANT

AMERICAN-MADE INNOVATION SINCE 1966



SUPERIOR SCALPING!

- Patented Dual-Screen Design
- Patented Smooth Start® Technology
- Proven Durability And Productivity

107D SPECIFICATIONS

Height	12'-2"	3.71m
Length	29'-8"	9.04m
Width	8'-0"	2.44m
Total Weight	24,000 lbs.	10,886Kg

Patented dual screen design with center support (U.S. Patent #6,000,553) provides extended machine and screen performance

Hydraulically adjustable screen angles

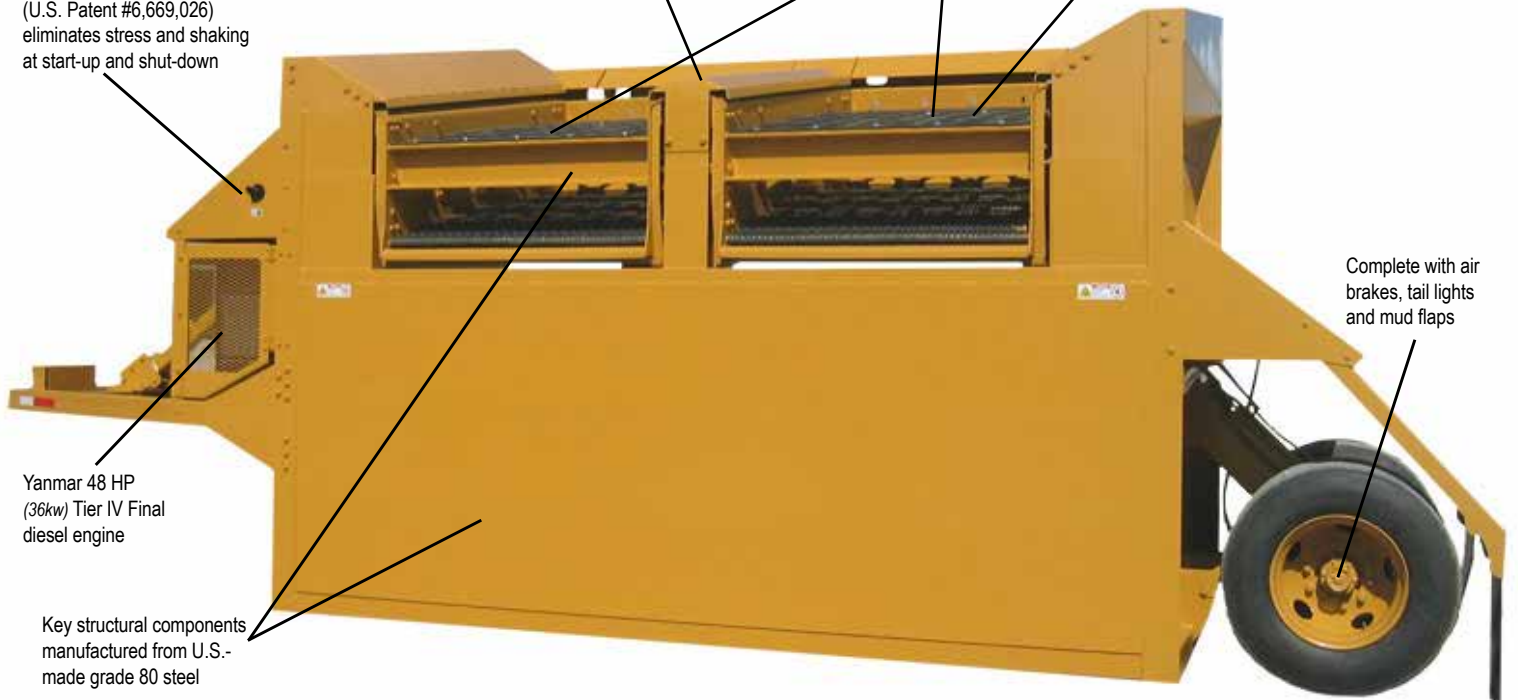
Low feed height of 10'-11" (3.33m)

Smooth Start® Technology (U.S. Patent #6,669,026) eliminates stress and shaking at start-up and shut-down

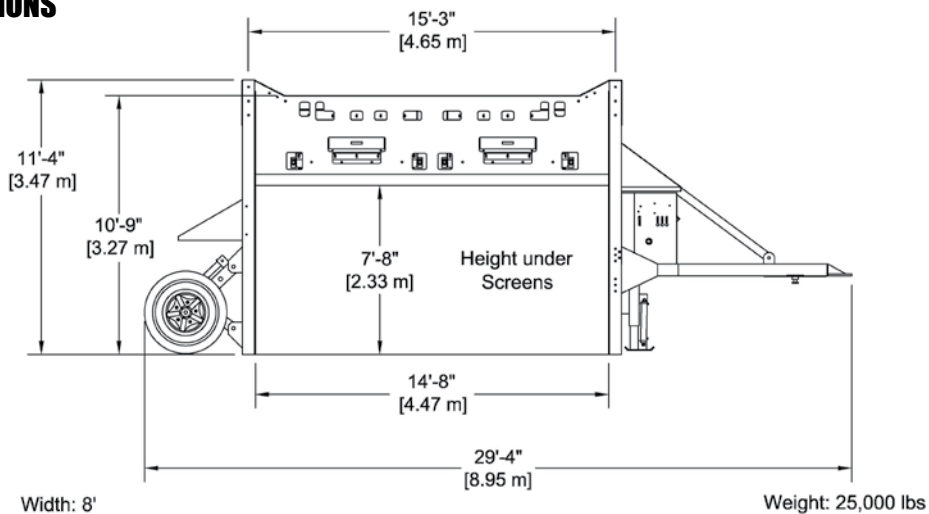
Yanmar 48 HP (36kw) Tier IV Final diesel engine

Key structural components manufactured from U.S.-made grade 80 steel

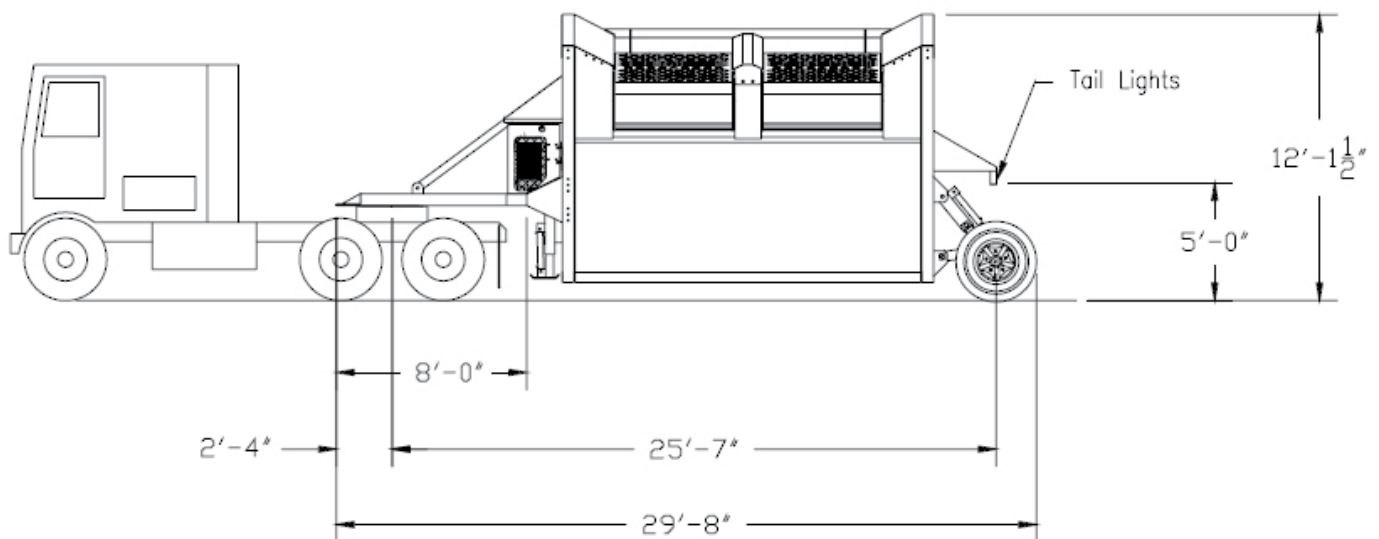
Complete with air brakes, tail lights and mud flaps



OPERATING DIMENSIONS



TRANSPORT DIMENSIONS



SCREEN

- Two 5' x 7' (1.52m x 2.13m) double-deck, two-bearing screens
- Smooth Start® Technology (patent #6401993)
- 3/8" (9.5mm) USA-made grade 80 steel
- 11" (280cm) clearance between decks
- 15'-3" (4.6m) feed width
- 10'-11" (3.33m) low feed heights

POWER SYSTEMS

- Yanmar® 48 HP (36kw) Tier IV Final diesel engine
- 60 Gallon (227L) baffled hydraulic tank
- 34 Gallon (129L) diesel fuel tank
- 12.5 hours of runtime processing without need to refuel

ADDITIONAL FEATURES

- Brake lights
- Directional lights
- Fifth wheel tow configuration
- Lifting eye — heavy-duty tow ring for field portability
- 22,500 lb. axle
- Mud flaps

STRUCTURE/UNDERCARRIAGE

- 5-point, 6" (152mm) tubular support structure
- USA-made grade 80 steel construction
- Single axle with dual 11R x 22.5" tires and air brakes
- Hydraulic axle raise and lower
- Hydraulic landing gear
- Lockable control panels

LOADING OPERATION

- 3 - 5 Cu. Yard (2.29 - 3.82 Cu. Meter) wheeled or tracked loader
- 2 Cu. Yard (1.53 Meter) excavator



Height	Length	Width	Weight	Screen Size (2)	Conveyor Width	Engine	Wheels	Fuel Capacity	Hydraulic Capacity
12'-2"	29'-8"	8'-0"	24,000lbs	5'-0"x7'-0"	42"	Yanmar	Dual 11R	34gal	60gal
3.71m	9.04m	2.44m	10,886kgs	1.52m x 2.13m	1,067mm	48 HP 36kw	x 22.5"	129L	227L